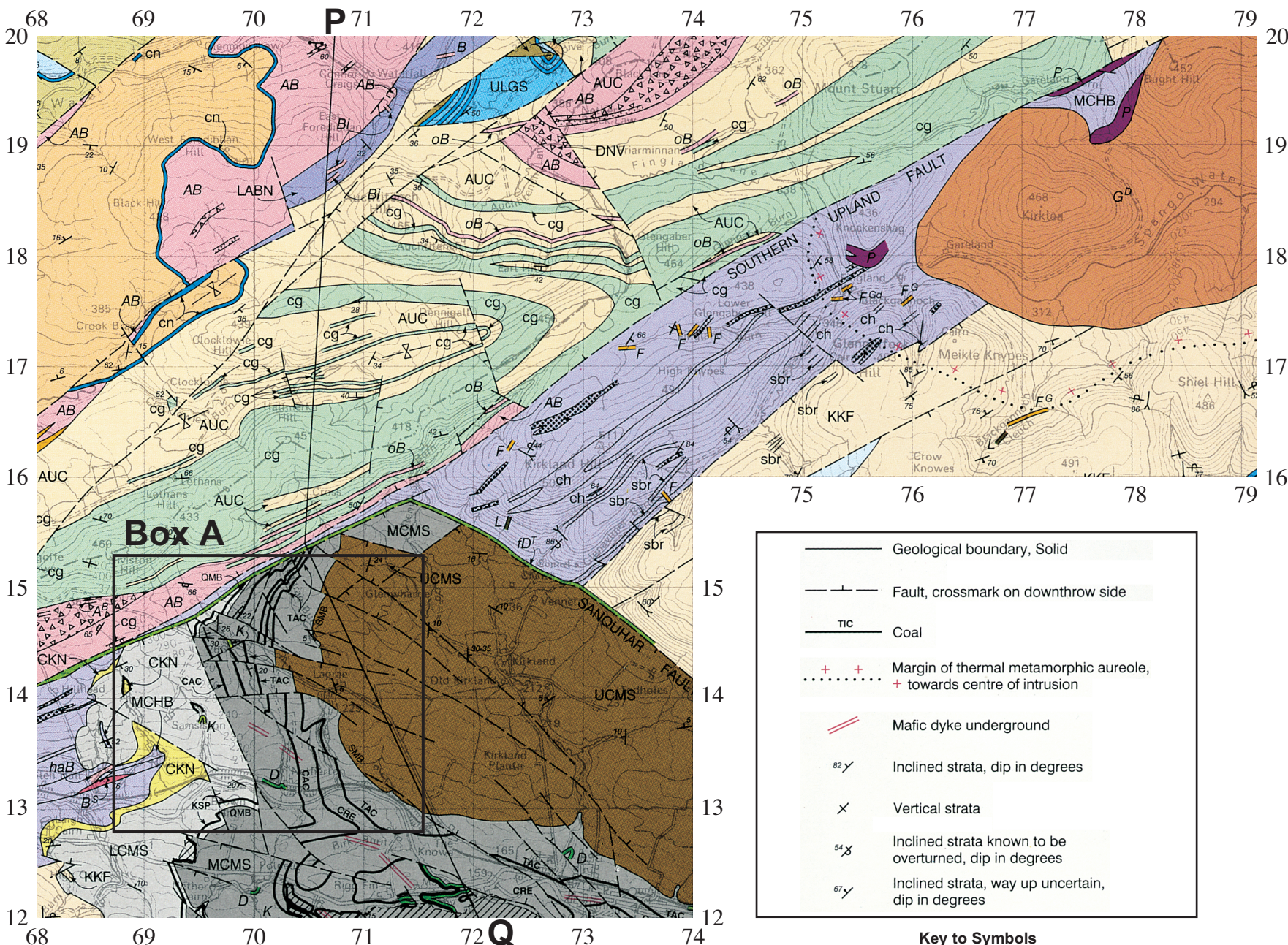


WJEC 1214/01-A ADVANCED GEOLOGY GL4 JUNE 2010
Extract from New Cumnock (Solid) 1:50 000 (1cm to 500m)

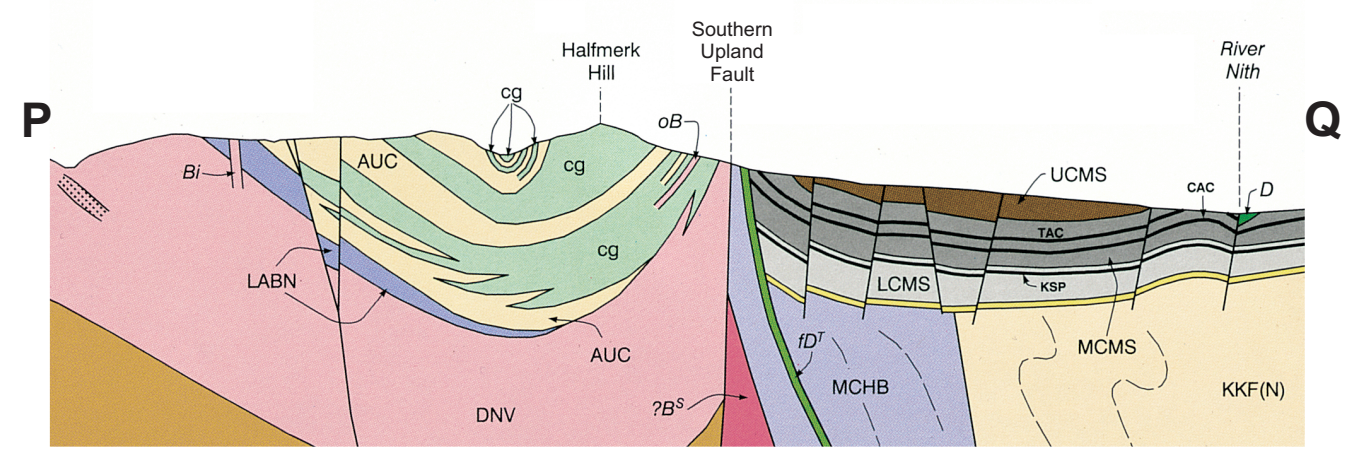


Scale 1:50 000



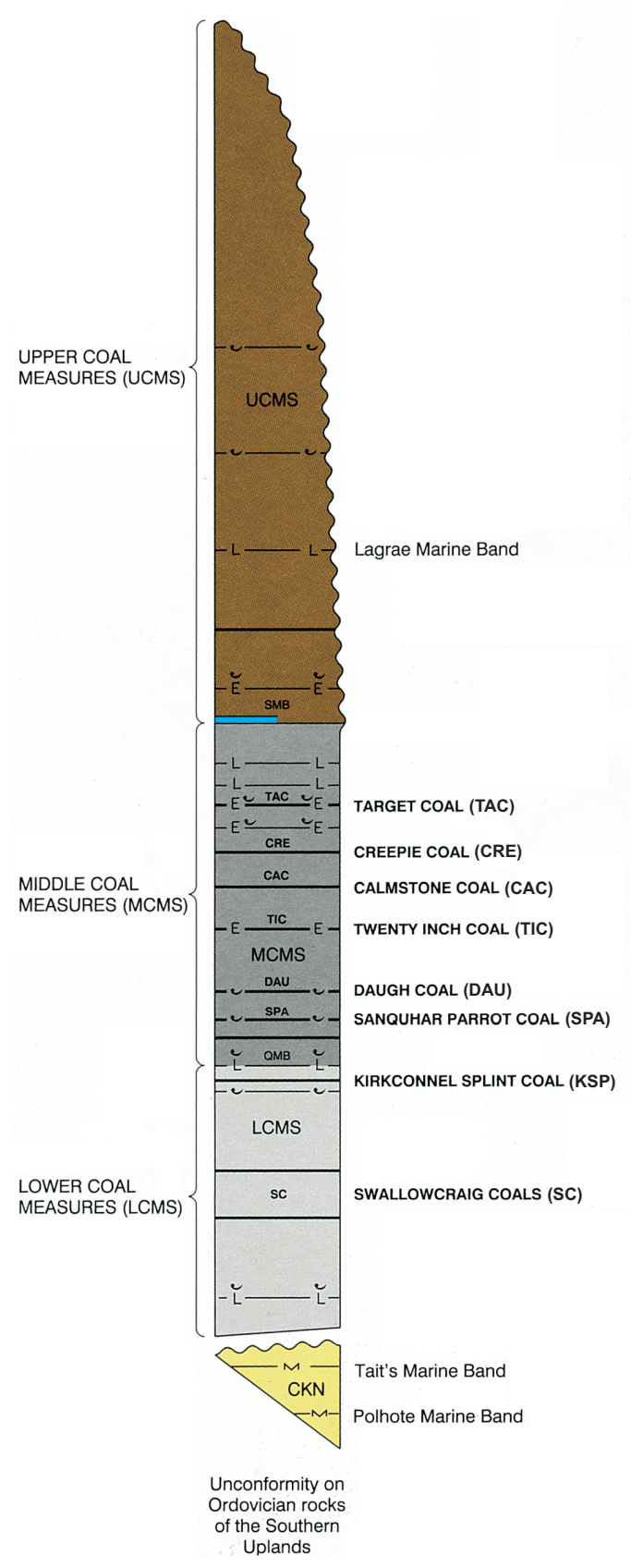
GEOLOGICAL CROSS-SECTION SHOWING THE GENERAL RELATIONS OF ROCKS ALONG THE LINE P-Q

Horizontal scale 1:50 000 Vertical exaggeration x2



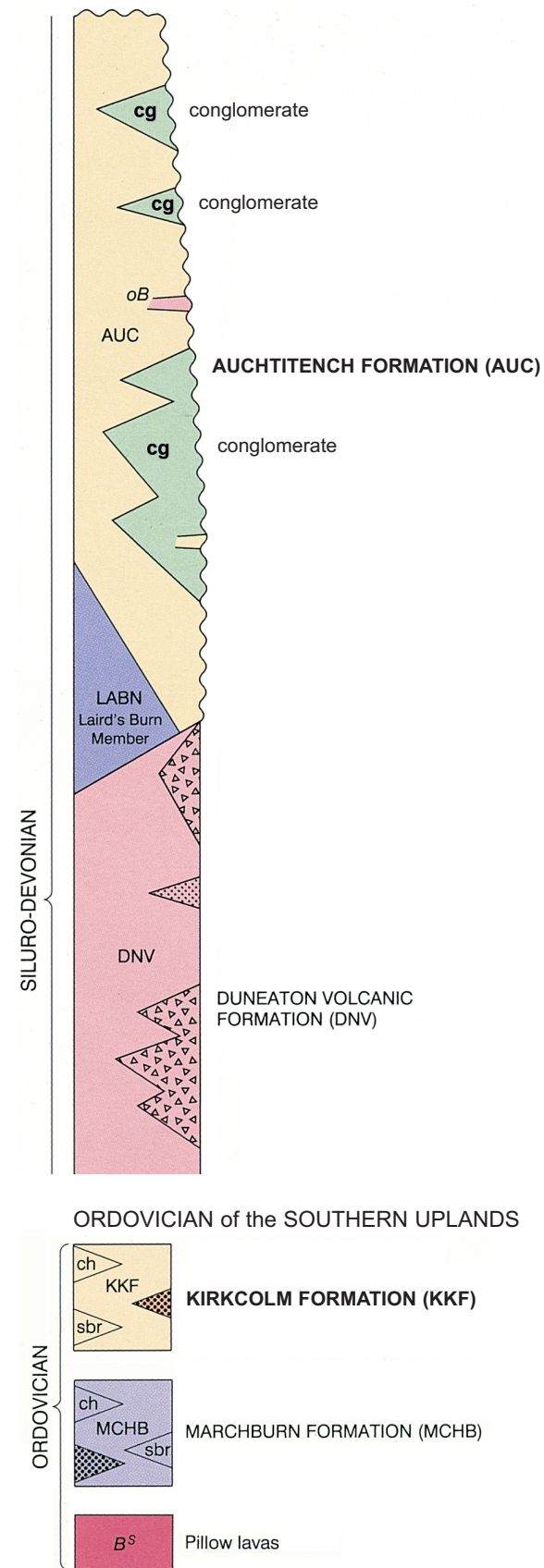
GENERALISED GEOLOGICAL COLUMN of CARBONIFEROUS STRATA SOUTH WEST of the SOUTHERN UPLAND FAULT (Carboniferous strata to the NW omitted for clarity)

Scale 1:3 000 (1cm to 30m)



GENERALISED GEOLOGICAL COLUMN of SILURO-DEVONIAN STRATA NORTH WEST of the SOUTHERN UPLAND FAULT

Scale 1:10 000 (1cm to 100m)



Reproduced by permission of the
 Director British Geological Survey
 © NERC All rights reserved

INTRUSIVE IGNEOUS ROCKS

- fD^T Dolerite
- G^D Granodiorite (a type of Granite)